

F 74
.58
G672
Copy 1

THE PICTURESQUE CITY

SPRINGFIELD

MASSACHUSETTS



SPRINGFIELD FROM THE BARNEY ESTATE

WONDERFUL TOWERS OF TWO CONTINENTS

CAMPANILE
SPRINGFIELD



WASHINGTON
MONUMENT



WASHINGTON
WASHINGTON

NEW MUNICIPAL BUILDINGS, AND CAMPANILE, SPRINGFIELD, MASSACHUSETTS, UNSURPASSED AMONG PUBLIC BUILDINGS. COST \$2,000,000—AND WORTH IT.

THE UNIQUE FEATURE of the group is the CAMPANILE reaching skyward 300 feet and of which any one might justly be proud. Elevators will carry visitors to the landings, from which grand views can be enjoyed of the magnificent Connecticut Valley.

The series of seven views printed in this booklet show you this grand panorama just as the camera reflects it.

COME TO SPRINGFIELD, MASSACHUSETTS, THE CITY OF PROGRESS AND
"SEE SOMETHING WORTH WHILE."

The Picturesque City Springfield, Massachusetts

A series of forty views showing the picturesque side of this "City of Homes"—the features that make Springfield so attractive as a residential city and the mecca for pleasure seekers.

GEORGE S. GRAVES, Publisher, 21 Besse Place, Springfield, Mass.

Copyright 1913, by George S. Graves. All rights reserved.

TEN CENTS A COPY.

MASSACHUSETTS LEADS ALL STATES

in the proportion of highways improved and SPRINGFIELD is the central point of its most picturesque region. A clean progressive city of 100,000 population, and growing about 5,000 a year.

THE BEAUTIFUL CONNECTICUT RIVER is Springfield's greatest physical asset and is enjoyed by more people than any other one recreation spot in Western New England. Coursing 375 miles through four states from Canada to Long Island Sound no portion of it is any more picturesque than the five miles of its tree-lined shores that make up Springfield's water front.

600 ACRES OF PARKS AND PLAYGROUNDS Park superintendents estimate that any self respecting city should have one acre of park land for every 200 residents. Springfield has an acre for every 170 residents.

ITS FOREST PARK reached by trolley in ten minutes from busy Main Street has about 500 acres, a natural park with fifteen miles of roads and paths winding through the woods and valleys by rippling brooks and transparent lakes. OVER 50 SMALL PARKS are scattered throughout the city.

150 MILES OF TREE LINED STREETS furnish the setting for model homes and for pleasant drives.

ITS PICTURESQUE TROLLEY RIDES. Our model street railway radiates 137 miles through the Connecticut Valley where can be found over 100 lakes and streams, beautiful hills, bold mountains and pleasant resorts.

TO RIVERSIDE PARK by steamer or trolley. Three miles below Springfield on the Connecticut River in a grove of fragrant pines is Springfield's most popular resort. It is the mecca for church and society picnics, nearly every fraternal society in this region using Riverside Grove for an annual outing. Its clamcakes are famous, 40,000 people go there in a single day—a million people went there in the season of 1912.

Come to Picturesque Springfield, the Showplace of Western New England

THE CONVENTION CENTER.

"Here is a center from which emanates thought.

What is said in Springfield is heard around the world."
THOMAS R. MARSHALL, *Vice-President of United States*

DIMENSIONS
OF
AUDITORIUM
115 Feet Front
175 " Deep
75 " High

MATERIALS
Indiana Limestone
Steel and Concrete

Fire and Panic
Proof



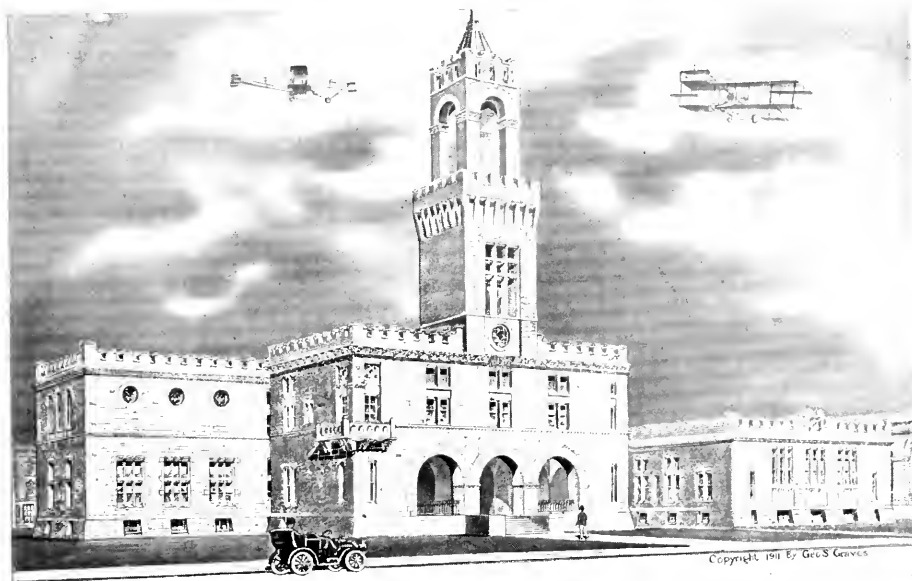
NEW AUDITORIUM OF MUNICIPAL GROUP.

In its CLASSIC AUDITORIUM Springfield has one of the finest places of assemblage in the world. Seating 4,500 people and with 22,000 square feet of exhibition room, it offers convention facilities superior to any New England city outside of Boston.

OUR NUMEROUS RAILROADS AND FINE HOTELS offer abundant and good accommodations for thousands.

THE TWELVE THEATRES and amusement places are of a high class. Its big stores are the equal of those of larger cities.

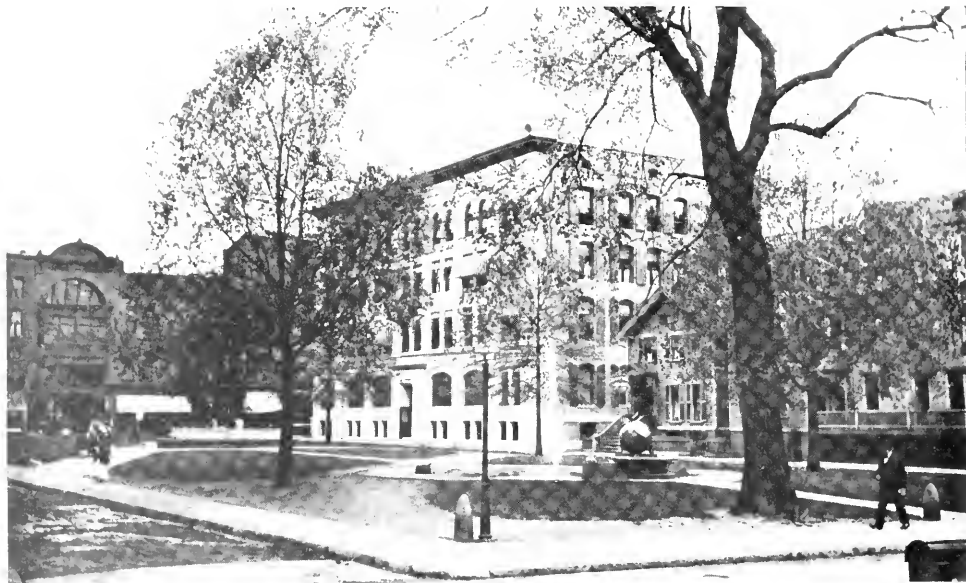
LEGAL CENTER OF PICTURESQUE SPRINGFIELD.



HAMPDEN COUNTY COURT HOUSE as recently enlarged, and HALL OF RECORDS
Located on Elm Street at southwest corner of Court Square.

The tower 150 feet high is modeled after the Palazzo Vecchio at Florence, Italy. The Hall of Records on the right was added in 1910, and in 1911 the wing on the left was put on to take care of the County's increasing business.

SPRINGFIELD'S CONVERSATION CENTER.

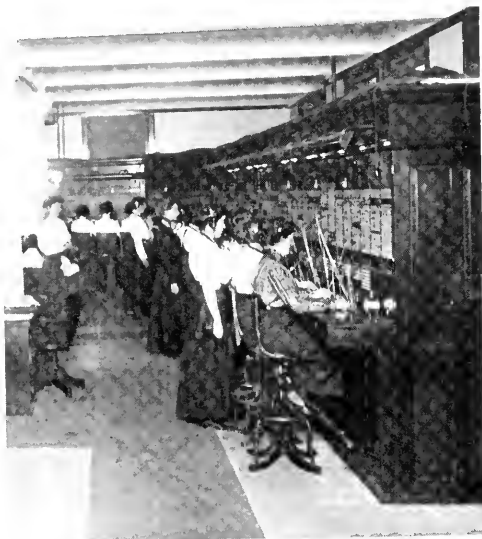


STEARNS SQUARE AND TELEPHONE BUILDING

Situated just off from Main Street between Bridge and Main Streets, this is a busier spot than "Busy Main Street," for over 100,000 "Hellos" are heard here every week day

THINK WHAT YOU OWE "THE TELEPHONE GIRL."

The telephone girl sits still in her chair
And listens to voices from everywhere,
She hears all the gossip, she hears all the news,
She knows who is happy, and who has the blues;
She knows all our sorrows, she knows all our joys;
She knows every girl who is chasing the boys;
She knows of our troubles, she knows of our strife
She knows every man who is mean to his wife;
She knows every time we are out with the boys,
She hears the excuses each fellow employs;
She knows every woman that has a dark past,
She knows every man that is inclined to be fast;
In fact there's a secret 'neath each saucy curl
Of that quiet, demure looking telephone girl.
If the telephone girl would tell all she knows
It would turn half our friends into bitterest foes;
She'd sow a small wind that would soon be a gale,
And engulf us in trouble and land us in jail,
She would let go a story (which gaining in force)
Would cause half our wives to sue for divorce;
She would get all the churches mixed up in a fight
And turn all our days into sorrowing nights,
In fact, she would keep all the world in a stew,
If she told a tenth part of the things she knew.
Now doesn't it set your head in a whirl
When you think what you owe the telephone girl?



PART OF OPERATING ROOM.

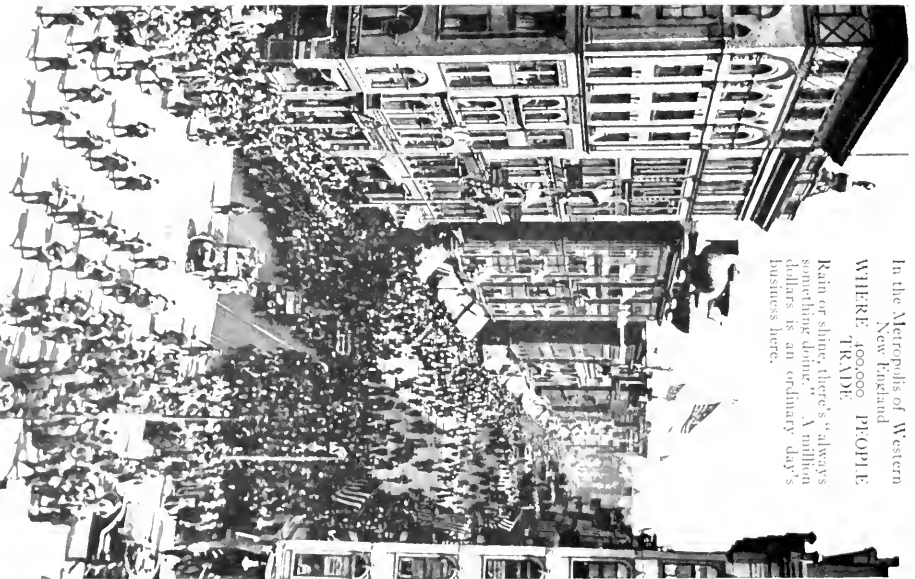
SPRINGFIELD has 16,000 telephones and 225 direct toll lines to 40 cities and towns. 100,000 calls are made daily through the central switchboard on which are 15,000 tiny electric lights. There are 350 local employees, and 30,000 miles of wire in the city. A Million Dollars is invested in buildings and equipment. We are at the top in per capita use of "Hello."

SPRINGFIELD'S PICTURESQUE MAIN STREET.

In the Metropolis of Western
New England

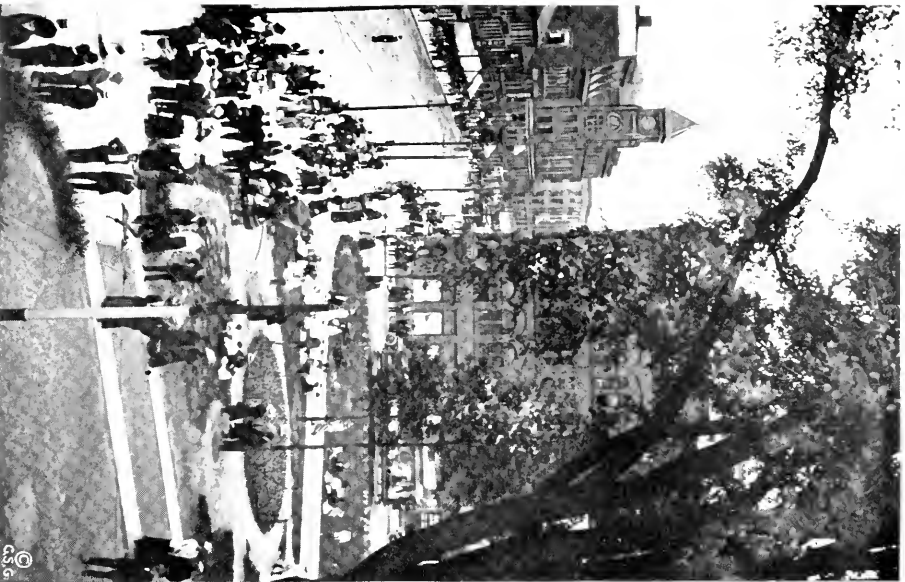
WHERE 400,000 PEOPLE
TRADE.

Rain or shine, there's "always
something doing." A million
dollars is an ordinary day's
business here.



BUSY MAIN STREET, from Post Office and HOTEL WORTHY
looking South to Masonic Building at State Street

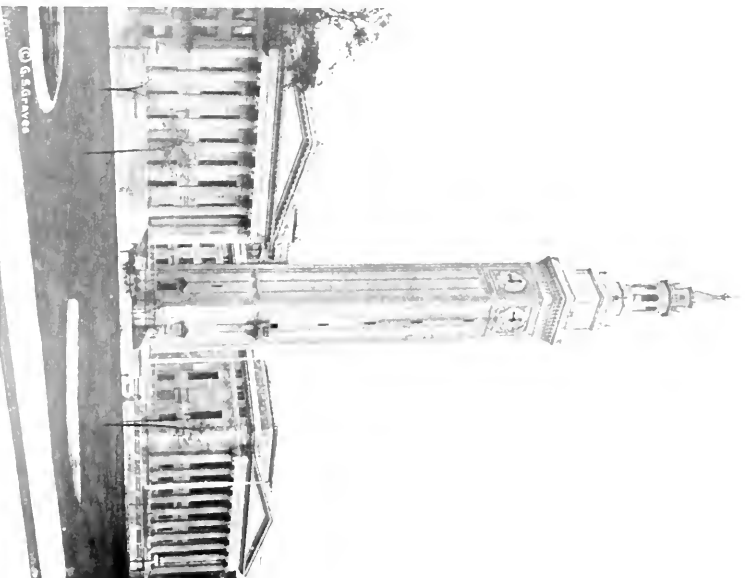
APPROACH TO MUNICIPAL GROUP.



©
C.S.G.

COURT SQUARE AT MAIN STREET
VIEW TO CHICOPEE NATIONAL BANK AND MASONIC
BUILDING AT STATE AND MAIN STREETS.

Magnificent in proportions, artistic in design and decoration.



SPRINGFIELD'S MUNICIPAL GROUP.

Finest civic group in America. View taken from Court Square Extension.

Left: A. C. Corbett, Architects; A. E. Stephens Co., Builders
THESE CLASSIC MUNICIPAL BUILDINGS, now being
finished at a cost of \$2,000,000 are typical of the "CITY OF PROG-
RESS." They will make Springfield famous, will elevate the standard
of architecture, public and private, and teach new and beautiful ideas.

The Auditorium on the left was opened in February, 1913 and
has a seating capacity of 4,500, with ample room for exhibition purposes.

The Administration building for the city offices on the right,
will be ready for use in the fall of 1913.

SPRINGFIELD'S WONDERFUL TOWER.

Unique among the world's spires, THE MECCA FOR SIGHT SEERS

[From Springfield Republican]

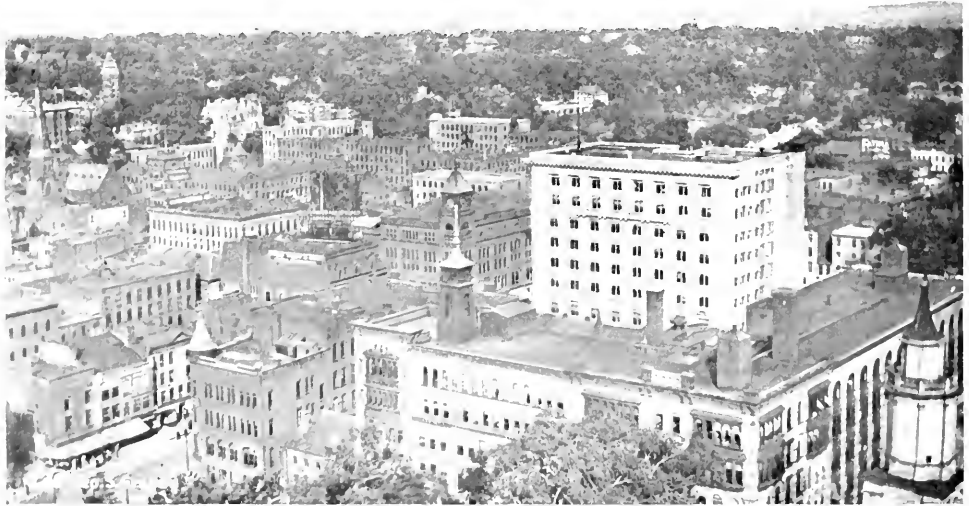
"It used to be fashionable to ascend the United States army tower, and the view from there is striking, but when the elevator to the top of the group is installed there will be no place in the city half so popular. The view is magnificent, and one looking down from the tower upon the city, away to the outskirts and farther off to the hills that bound the vision, sees for the first time at once the old city and the new, and its beautiful setting of forest, stream and hills."

There's no need of waiting for the elevator to get a glimpse of picturesque Springfield from the tower. The views that follow show the beauty spots of this region in a manner never before shown.



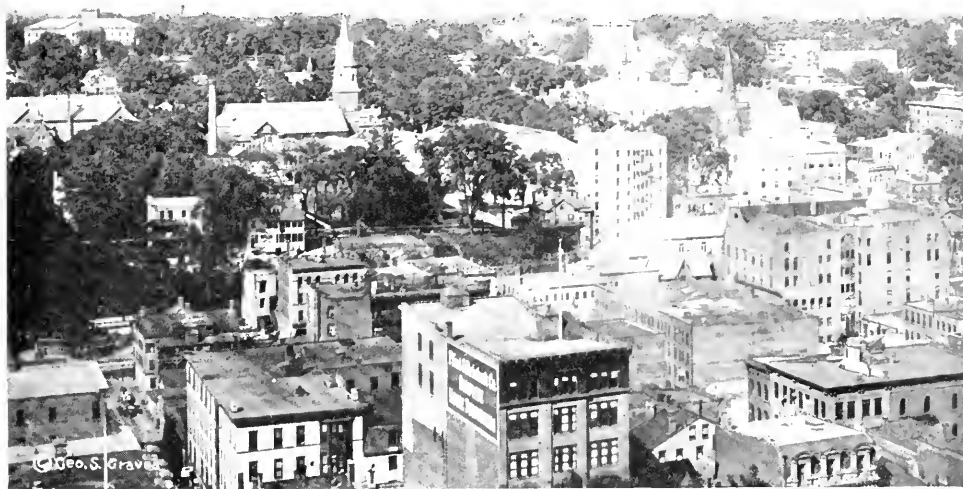
APPROACH TO MUNICIPAL GROUP
THROUGH COURT SQUARE FROM MAIN STREET.

BIRD'S-EYE VIEW FROM THE MUNICIPAL TOWER.



View over Court Square to Court Square Theatre Building, Massachusetts Mutual Life Building, Masonic Temple, Smith & Wesson Pistol Factory, State Street Baptist Church, The South Church and Crescent Hill, one of the highest points in Springfield, and where are located some of its finest residences.

BIRD'S-EYE VIEW FROM THE MUNICIPAL TOWER.. No. 2



View over busy Main Street at Court Square, looking to Armory Hill and United States Arsenal. Prominent in this view can be seen the City Library, St. Michaels Church, Wesson Hospital, and many other important buildings in the educational and religious center. State Street leading on to Boston is in the center of this view.

BIRD'S-EYE VIEW FROM THE MUNICIPAL TOWER. No. 3



VIEW OVER BUSY MAIN STREET FROM HARRISON AVENUE TO WORTHINGTON STREET, LOOKING TO MT. TOM AT THE NORTHERN GATEWAY TO SPRINGFIELD. FROM MT. TOM'S SUMMIT IS SEEN THE FINEST CULTIVATED LANDSCAPE VIEWS TO BE HAD FROM ANY HEIGHT IN THE WORLD.

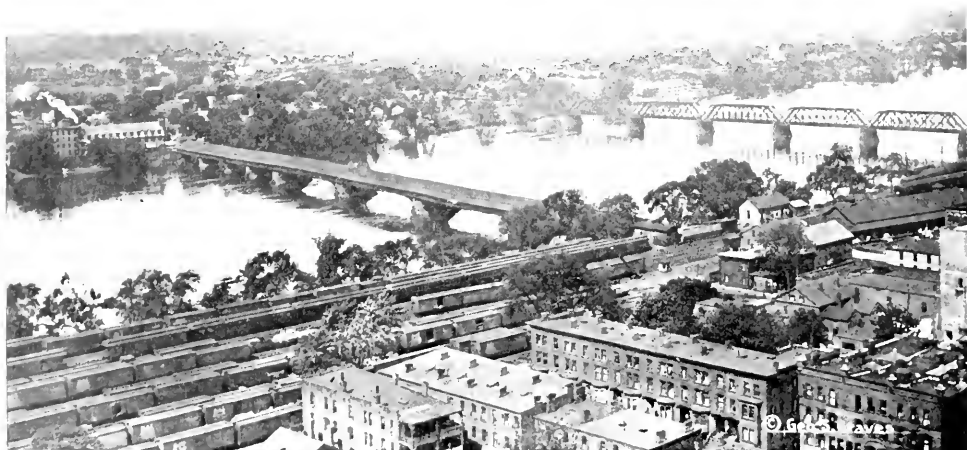
BIRD'S-EYE VIEW FROM THE MUNICIPAL TOWER. No. 4



View to Upper West Springfield across the Connecticut River. On the distant hills at the right are the grounds of the Springfield Country Club. In the foreground is seen the new Broadway Theatre and Myrick Building. Beyond is the United States Envelope Factory.

This view with the five following show the course of the Connecticut River about six miles from the Northern limits of Springfield South to Riverside Grove, also the steamers that carry you there.

BIRD'S-EYE VIEW FROM THE MUNICIPAL TOWER. No. 5



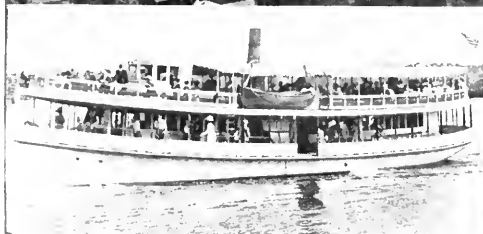
View to West Springfield across the Connecticut River showing the Old Toll Bridge, built in 1816, and Boston & Albany Railroad Bridge. Beyond West Springfield is the beautiful hill country ending in the noted Berkshire Mountains

BIRD'S-EYE VIEW FROM THE MUNICIPAL TOWER. No. 6



View to Connecticut River at Court Square Extension. The Agawam Meadows in the background. This is Springfield's Harbor, and the headquarters for boating and canoeing. Where the Steamers Sylvia and Zita Mae take on thousands for the enjoyable sail to Riverside Grove. Over 200 power boats and sail boats are anchored here.

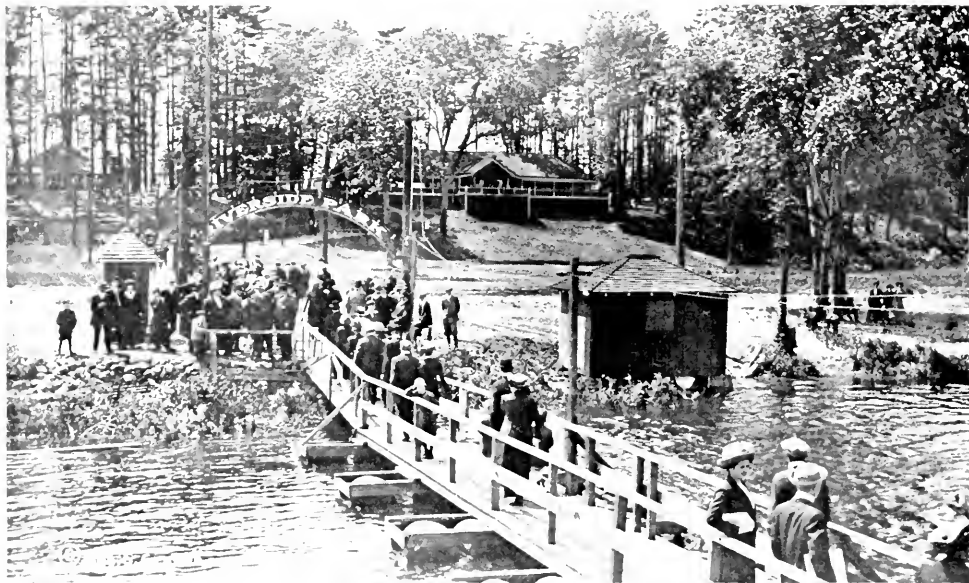
BIRD'S-EYE VIEW FROM THE MUNICIPAL TOWER. No. 7



The Connecticut River from State Street South, looking to the westerly entrance of Forest Park. Three miles beyond the bend in the river is Riverside Park, the city's most popular pleasure resort. The crowds on the Sylvia and Zita Mae that run to the park can tell you all about it.

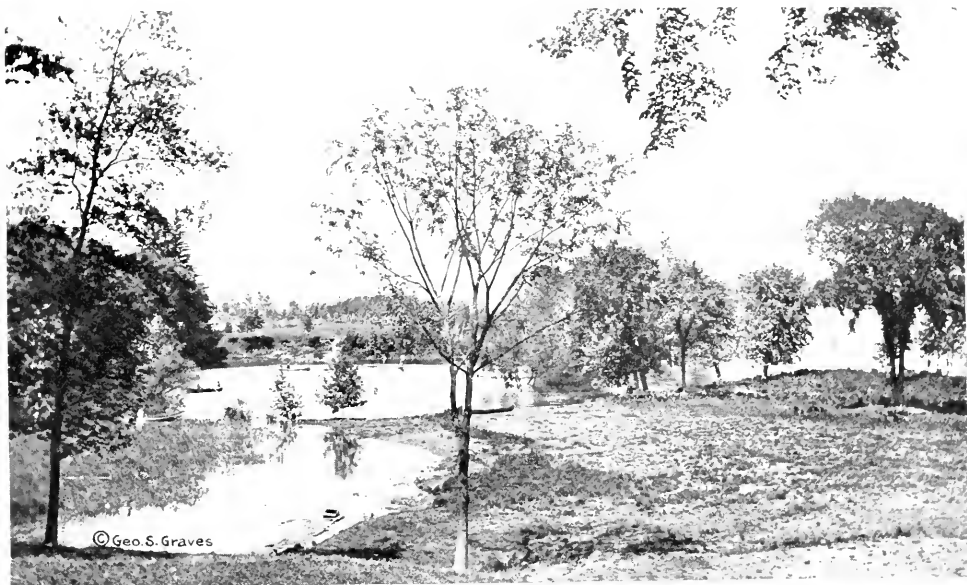


VIEW FROM LONG HILL SOUTH TO LONGMEADOW BLUFFS. When the proposed dam and new canal at Windsor Locks is a reality you will see this steamer crowded with Hartford people coming to visit or to live in Picturesque and Progressive Springfield.



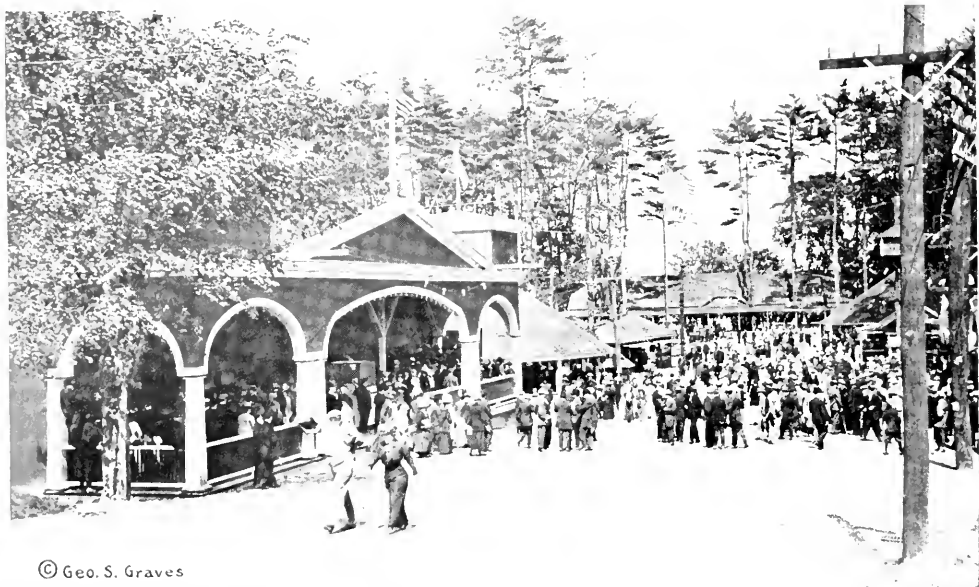
AT RIVERSIDE PARK

View from landing to the grove of fragrant pines, where a million people went in the season of 1912. 40,000 come here in a day.



AT RIVERSIDE PARK.

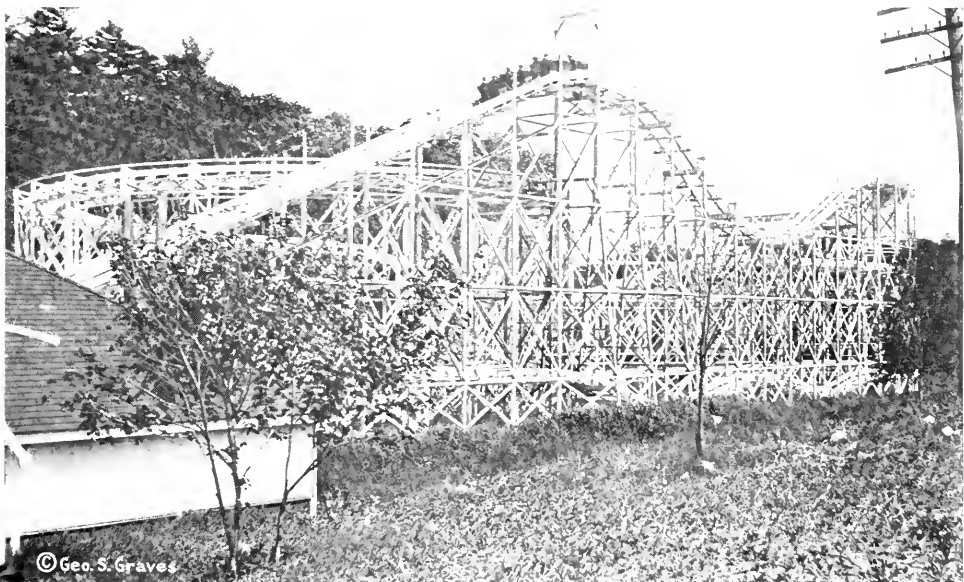
The charming vista seen from the grove looking to Connecticut River. At the left is the new pavilion and grounds for clambakes. No better bake can be had than is served here. 3,000 persons can be served at one sitting.



© Geo. S. Graves

AT RIVERSIDE PARK.

With the crowd on "The Midway." At the left is a new leading feature, "THE PANAMA CANAL"—crowded every minute. The dancing pavilion at the end is always busy.



AT RIVERSIDE PARK.

The giant coaster, the greatest thriller in this region. Always a crowd waiting for a ride.

IN THE HILLS OF WEST SPRINGFIELD.



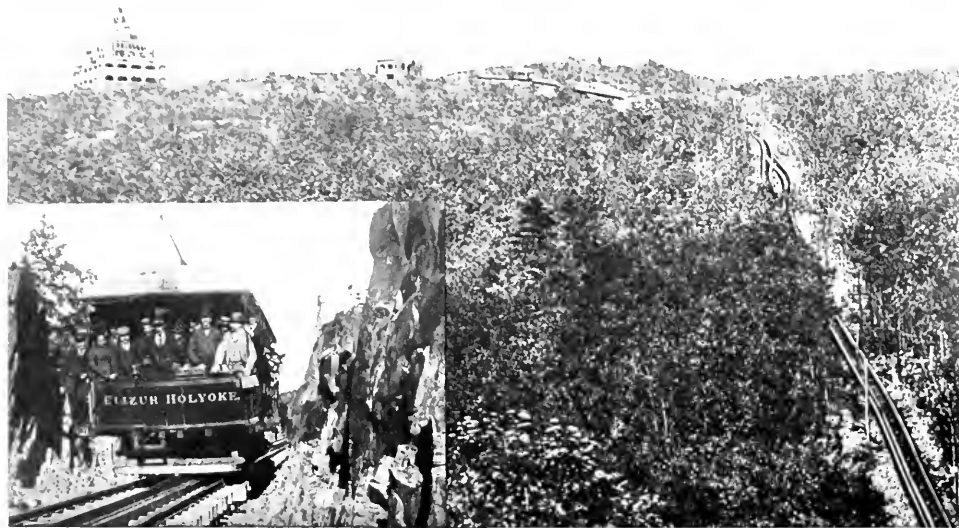
THE COUNTRY CLUB of Springfield and its picturesque environment. On a hill at the left are the Club Grounds overlooking the Connecticut Valley, Connecticut River and Mount Tom.

THE NORTHERN GATEWAY TO SPRINGFIELD.



View to the Connecticut River, City of Chicopee, Mount Tom and Mount Holyoke ranges from Meeting House Hill. A portion of the picturesque country seen from Springfield Country Club.

MOUNT TOM, 1218 FEET ABOVE SEA LEVEL.



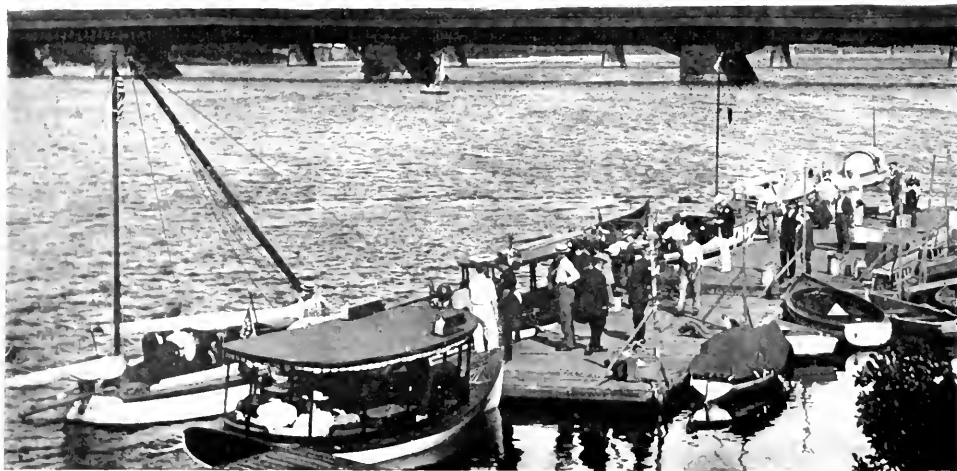
MOUNT TOM, between Holyoke and Northampton, showing electric railway to the Summit House. View in corner shows electric car passing through rock cut. The ride through West Springfield to Mountain Park, Holyoke, then by electric cars to the Summit House on Mount Tom cannot be surpassed anywhere. Return via Northampton and Amherst, the garden spots of Hampshire County, thence over the Mount Holyoke range, and you will surely say "Unequaled."

ONE HOUR BY TROLLEY FROM SPRINGFIELD.



SUMMIT HOUSE, MT. TOM. Most popular resort of the kind in all New England. Nothing like it anywhere. The views from the Summit House are more diversified and beautiful than those from any mountain in the world. On clear days objects 85 miles distant can be seen.

THE CONNECTICUT RIVER FOR YACHTING.



LANDING OF THE SPRINGFIELD YACHT CLUB AND SPRINGFIELD CANOE CLUB, at foot of Elm Street, Court Square Extension. Over two hundred yachts, power boats and canoes are owned here for river enjoyment.

U. S. GOVERNMENT PRESERVE FOR CANOEING.



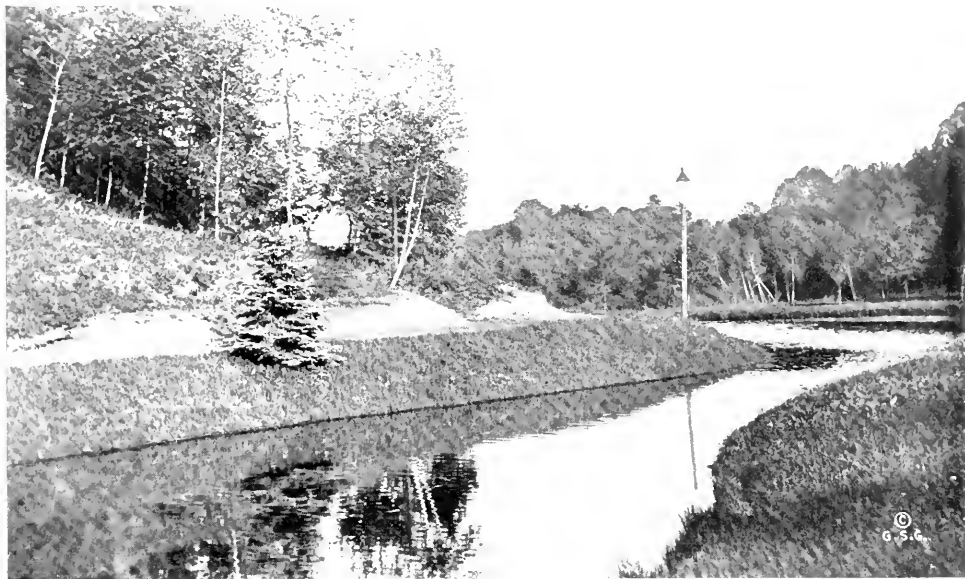
THE PICTURESQUE WATERSHOPS POND, AT INTERNATIONAL Y. M. C. A. TRAINING SCHOOL.

A paradise for canoeing, bathing, fishing and skating. This beautiful sheet of water right in the city limits extends for about five miles, with numerous coves heavily bordered with pine trees its entire length. It is owned by the United States Government, but can be freely used by all. For canoeing it is the most popular place in Springfield, several hundred canoeists using it during the summer season.



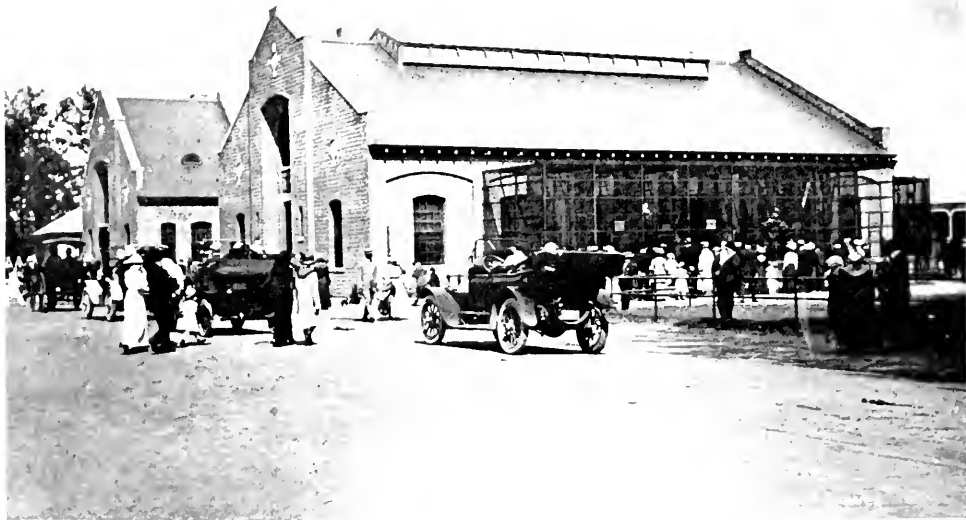
IN FOREST PARK

Pecosie Brook and Barney Estate on the Connecticut River at southerly entrance to SPRINGFIELD
Reached by trolley from busy Main Street in ten minutes.



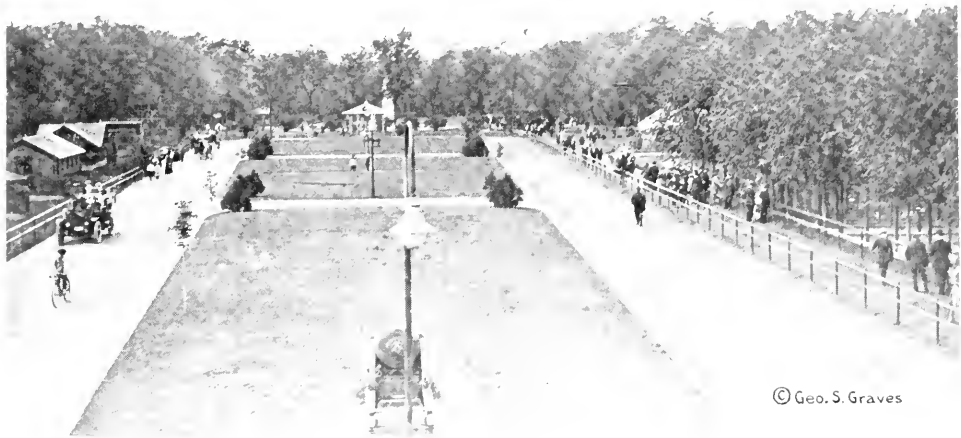
IN FOREST PARK.

A glimpse of the skating pond on Meadow Drive through the lake region. There are fifteen miles of drives and walks in this park alone.



IN FOREST PARK AT THE ZOO, ONE OF THE POPULAR FEATURES.

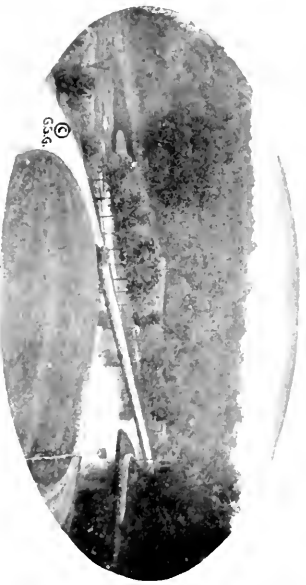
The exhibit here comprises over twenty species of animals and there are 130 specimens. The great new attraction is a pair of African lions given the city by Stanford L. Haynes.



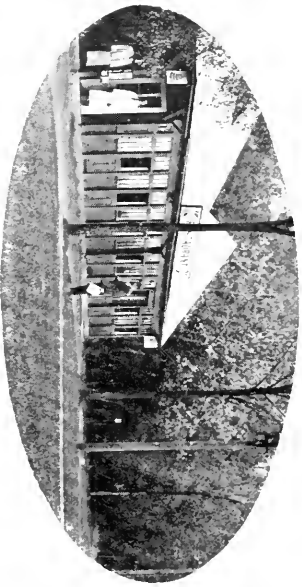
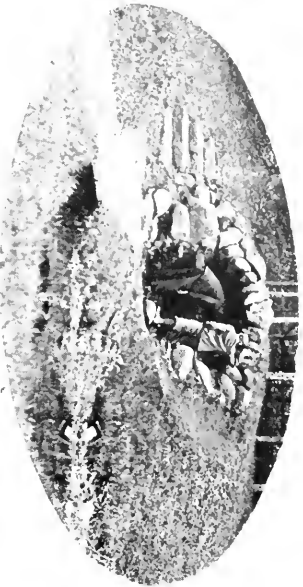
© Geo. S. Graves

THE PLAZA IN FRONT OF THE ZOO AT FOREST PARK.

At the right are the pheasant pens where can be seen six varieties and forty specimens. Beyond is the greenhouse, restaurant, the bear pit and wading pool. At the left are the prairie dogs, wolfs, foxes and eagles



IN FOREST PARK
Drive Through the Lake Region
Rustic Pavilion near Main Entrance
Swan and Duck Pond



IN FOREST PARK,
Bowles Drinking Fountain, Meadow Drive,
Restaurant in the Pine Woods,
The Grotto, Meadow Drive.



IN THE DEER PRESERVE AT FOREST PARK.

Where can be seen thirty specimens, most of them being bred here. Adjoining can be found Elk and Buffalo

THE LITTLE GRAY BEGGAR

He comes without fail in the storm or the sun,
And stands at my door every day,
And patiently waits for the bounty I give,
A bold little beggar in gray.
He is as fat as a seal, and sleek as a mink,
His fur coat is better than mine;
And he carries a poncho rolled up on his back
That in rain for protection is fine.

He never says "Thank you," but takes all he gets,
And when he's exhausted my store
He folds o'er his stomach his tiny gray paws,
Pathetically begging for more.
His favorite nut is the pecan, but now
He is getting so lazy, alas!
He wants them all cracked, or he buries each one
In the dry withered leaves or the grass.

He sits on the fence when his dinner is done
And washes his face like a cat,
Then by aerial railway returns to the tree
Where no doubt he has furnished a flat.
But the door-yard looks empty, dull, and forlorn,
When he merrily scampers away,
The squirrel that comes to the house to be fed,
The dear little beggar in gray.—MINNA IRVING.
Copyright, 1913, by Star Company.



At hundreds of Springfield homes "Little Gray Beggars" are welcome visitors and their acts of vandalism are overlooked for the pleasure they give. In Forest Park their wants are regularly looked after by the "City Fathers."

SPRINGFIELD'S MOST PICTURESQUE THOROUGHFARE.



VIEW UP STATE STREET, AT CORNER OF BYERS STREET

Entrance to Armory Grounds on the left

From the banks of the Connecticut River State Street extends the length of the city. In Colonial days it was the "Old Bay Path" and stage road to Boston. Beautiful Elms and Maples line its borders for miles.

The United States Armory, established here 118 years ago, gave Springfield the impetus for its present marvelous growth, and the Springfield rifle has made its fame world-wide. The shops where the rifle is made are located in a beautiful park which is free for visitors to enjoy.

MILITARY STATION OF UNITED STATES.



UNITED STATES ARSENAL, Armory Grounds, State Street. Elevated 160 feet above Connecticut River, overlooking the city and facing the Berkshire Mountains it is a conspicuous landmark.

The arsenal, built in 1846, is modeled after the East India house in London. Five hundred thousand rifles can be stored within its walls, and an equal number in other arsenals.

The Springfield Rifle is the principal product of the Armory but the model of CAVALRY SWORD designed here has been approved by the Secretary of War and orders given to make 20,000. This number will equip the entire cavalry division of the United States Army. Experts say the new sword excels any sword made in the world.

BIRD'S-EYE VIEW FROM U. S. ARSENAL—SOUTHWEST.



SPRINGFIELD, MASSACHUSETTS, THE CITY IN A FOREST

Experts who plan ideal cities say there should be one live shade tree to every five inhabitants. Springfield is the only New England city reaching this high standard. A city forester looks after the 20,000 shade trees here to see that moths and worms do not corrupt them.

A glance at these two views from the arsenal shows one how trees dominate Springfield's landscape. No matter in what direction you look it is always the same—"a city with country blessings."

This view looks to the section between State Street and Court Square and from the Armory to the river. The Massachusetts Mutual Life Building, our leading skyscraper shows most prominent. Beyond at the right is seen the County Court House spire, First Church steeple and the Campanile towering 300 feet.

BIRD'S-EYE VIEW FROM U. S. ARSENAL—NORTHWEST.



SPRINGFIELD, MASSACHUSETTS, THE CITY IN A FOREST.

Looking over the city from United States Arsenal Tower 160 feet above level of the Connecticut River, which flows along the City's entire length. Foot Hills of the Berkshire Mountains in the distance.

Overtopping all is the beautiful CAMPANILE of Springfield's Classic Municipal Group, reaching skyward 300 feet—the coming mecca for tourists. North from the CAMPANILE is seen prominently Forbes & Wallace Building, Myrick Building, Trinity Church and Hotel Kimball. At the extreme right is the factory of United States Envelope Company whose various plants produce over half of the envelopes used in the country.

JUL 5 1913

SPRINGFIELD'S HARBOR AT THE CIVIC CENTER.



SPRINGFIELD'S RIVER FRONT AT COURT SQUARE EXTENSION AND THE CIVIC CENTER

This is Springfield's harbor, the point of departure for steamers to Riverside Park, four miles down the river. The Springfield Yacht Club and Springfield Canoe Club adjoin the steamboat wharf.

PROGRESSIVE NEWS, 115 North Main Street, Springfield, Mass., is the only newspaper published in Springfield, Mass. Its features include: local news, sports, and a variety of other interesting articles. It is published daily except on Sundays and public holidays. For more information, contact: GEORGE S. GRAVES, 21 Besse Place, Springfield, Mass.

EDUCATIONAL CENTER OF SPRINGFIELD.



MERRICK PARK AT STATE AND CHESTNUT STREETS.

In the foreground is the new CITY LIBRARY, costing \$355,000 with a capacity for 500,000 books. At the left stands the monument by St. Gaudens of Deacon Samuel Chapin, one of the founders of SPRINGFIELD. Back of the library is the ART MUSEUM celebrated the world over for the valuable art collection of George Walter Vincent Smith. Beyond is the Science Museum.

Springfield is the center of a region, having more endowed schools and colleges than any other section of equal area in the world. Over 25,000 young people from all over the country get their education in the Connecticut Valley.

LIBRARY OF CONGRESS



0 014 079 597 5



SPRINGFIELD FROM LONGMEADOW ROAD